



# Potential Erosion Hazard Areas

"Erosion hazard areas" are areas that because of natural characteristics, including vegetative cover, soil texture, slope, gradient, and rainfall patterns, or manmade changes to such characteristics, are vulnerable to erosion. (FMC 17.11.020)

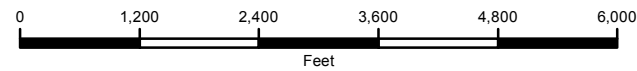
## Legend

Potential Erosion Hazard Areas

Water body

City Boundary - Fife

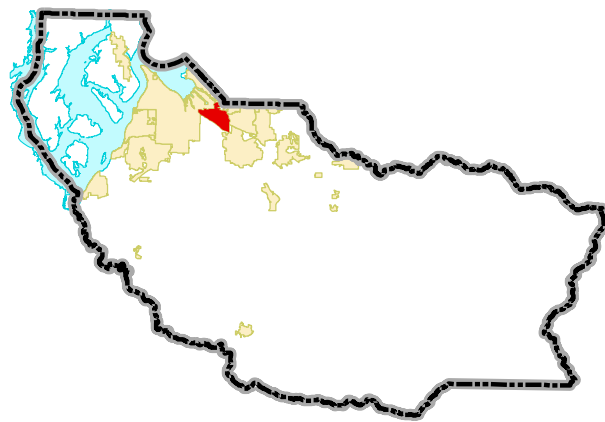
Annexation Boundary - Fife



NOTE: This map was created using the Pierce County Hyrdo Surface GIS Layer and adding or adjusting lakes and ponds within the City of Fife based on the current 2014 Orthophotos. The City has not conducted a field survey of erosion hazards.

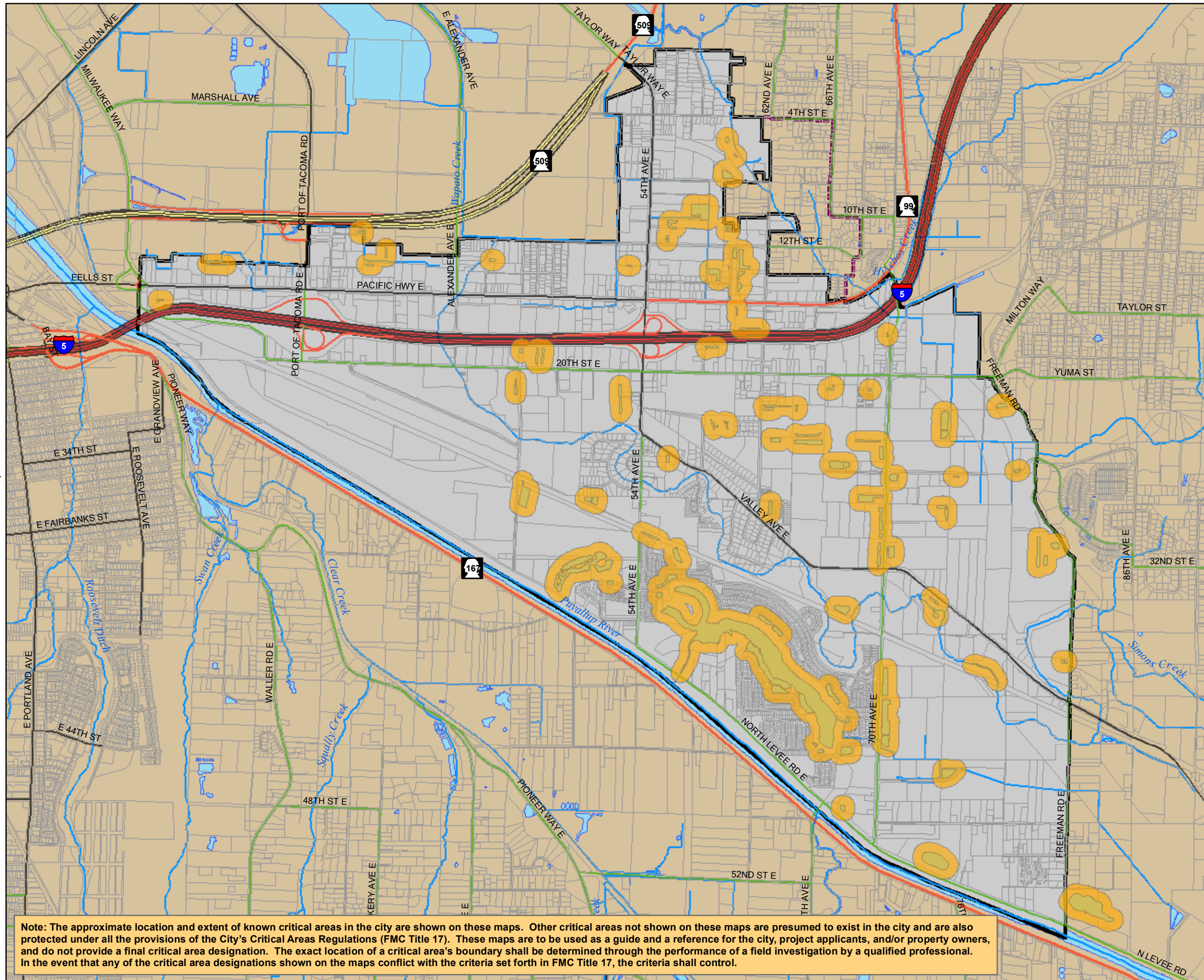
Potential Erosion Hazard Areas have been determined using Shoreline Erosion Hazard Areas: areas within 200 feet of a freshwater (lake or pond) or marine (Puget Sound, tidal marshes, and estuaries) shoreline, as measured landward perpendicularly from the edge of the ordinary high water mark. All Potential Erosion Hazard Areas shown within the City of Fife boundary are freshwater lakes and ponds greater than 2,500 sq. ft. with a 200' buffer.

This map does not contain erosion hazard areas that are caused by rivers, soils, or slope. These are already addressed in Potential Landslide Hazard Areas and the FEMA Flood Hazard Areas.



Source: Pierce County GIS, City of Fife GIS, October 2016; RLP

*The map features are approximate and are intended only to provide an indication of said feature. Additional areas that have not been mapped may be present. This is not a survey. Orthophotos and other data may not align. The City assumes no liability for variations ascertained by actual survey. ALL DATA IS EXPRESSLY PROVIDED 'AS IS' AND 'WITH ALL FAULTS'. The City makes no warranty of fitness for a particular purpose.*



**Note:** The approximate location and extent of known critical areas in the city are shown on these maps. Other critical areas not shown on these maps are presumed to exist in the city and are also protected under all the provisions of the City's Critical Areas Regulations (FMC Title 17). These maps are to be used as a guide and a reference for the city, project applicants, and/or property owners, and do not provide a final critical area designation. The exact location of a critical area's boundary shall be determined through the performance of a field investigation by a qualified professional. In the event that any of the critical area designations shown on the maps conflict with the criteria set forth in FMC Title 17, the criteria shall control.