

RESOLUTION NO. 1762

A RESOLUTION OF THE CITY COUNCIL OF THE CITY OF FIFE, PIERCE COUNTY, WASHINGTON AUTHORIZING THE CITY MANAGER TO EXECUTE AN AMENDMENT TO THE PROFESSIONAL SERVICES AGREEMENT WITH BCRA, INC. FOR DESIGN AND CONSTRUCTION MANAGEMENT WORK FOR THE BROOKVILLE GARDENS COMMUNITY PARK PROJECT TO ADD ADDITIONAL SERVICES

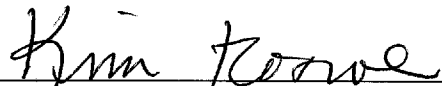
WHEREAS, on July 28, 2015 the City entered into a professional services agreement with BCRA, Inc. (the "Agreement") for design and construction management services for the Brookville Gardens Community Park Project; and

WHEREAS, City requested design changes and the discovery of a previously undocumented wetland required additional engineering and design services that were not included in the original scope of work; and

WHEREAS, it is appropriate to amend the Agreement to add the additional design and engineering serviced to the Agreement's scope of work; now therefore

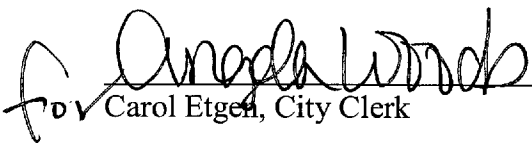
BE IT RESOLVED that the Fife City Council hereby authorizes the City Manager to execute the Amendment to City of Fife Professional Services Agreement attached hereto as Exhibit A, with BCRA, Inc. for additional design and engineering services for the Brookville Gardens Community Park Project.

ADOPTED by the City Council at an open public meeting held on the 28th day of February, 2017.



Kim Roscoe, Mayor

Attest:



Carol Etgen, City Clerk

EXHIBIT A
to Resolution No. 1762

AMENDMENT TO CITY OF FIFE PROFESSIONAL SERVICES AGREEMENT

The Professional Services Agreement dated July 28, 2015 (the "Agreement") between City of Fife and BCRA, Inc. ("Consultant") is hereby amended as follows:

1. The scope of work attached hereto as Exhibit A is hereby added to Exhibit A of the Agreement.
2. Compensation for the additional services described in Exhibit A to this Amendment shall be a lump sum of \$99,540.
3. Unless specifically modified by this Amendment, all other terms and conditions of the original Agreement shall remain in full force and effect.

CITY OF FIFE, WASHINGTON

BCRA, Inc.

By: _____
Subir Mukerjee
City Manager

By: _____

Date: _____

Date: _____

Approved as to form:

By: _____
Gregory F. Amann
Assistant City Attorney

EXHIBIT A

October 31, 2016

Ken Gill, PE
City of Fife Public Works
3725 Pacific Hwy E.
Fife, WA 98424

Re: Brookville Gardens Additional Services Request (ASR)

This additional services request is for design and cost estimating work on Brookville Gardens related to several additions to the project scope and redesign of systems based on City requests and unforeseen conditions.

1 Coordination with BergerABAM related to their design of power and gas trenches: \$1,610

We completed the following tasks for coordination with BergerABAM to provide them with information related to the power and gas trenches they were designing. We completed the following tasks:

- Cut finished grade profiles over proposed utility trench route.
- Modify route to accommodate future fish hatchery pad and coordinate modification with BergerABAM.
- Regrade portion of parking lot to provide cover for power and gas trench.
- Produce finished grade profile for modified utility trench route.

2 Redesign of stormwater detention system: \$2,670

Based on information from a local contractor, the City requested that the detention system for the area near the east playground and restroom be changed from a StormTech chamber system to a detention pipe system. We completed the following tasks:

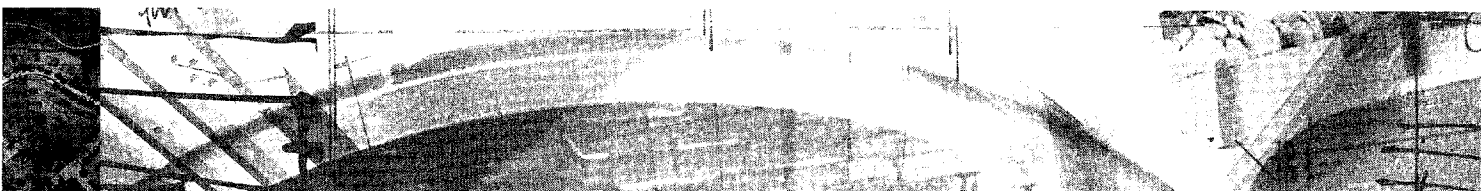
- Coordination with detention pipe suppliers regarding design and costs.
- Update stormwater model to reflect the redesigned detention system.
- Update plans and specifications for the redesigned detention system.

3 Redesign of sewer system to allow for future connection up Valley Ave to the west: \$1,680

The City requested that the design of the sanitary sewer main serving the site be modified to remain deep and allow for future extension of the main up Valley Ave. We completed the following tasks:

- Update sewer main design and utility plan based on City comments.
- Add trench sleds to plans, specifications, and estimate.

4 Redesign of water system to provide separate fire service: \$6,580





After further review of the original design, the City of Fife requested a redesign of the water system to separate the domestic water service from the fire service for the park due to residence time in pipes, particularly over the winter. The City also requested that the water main be extended to connect to the public main installed with the FedEx facility to the east to create a looped system. After design of the loop connection to the FedEx site was underway, the City indicated that the connection was no longer preferable due to the easements that would be required on the FedEx property. We changed the design to a dead-end fire main from Valley Ave to the vicinity of the buildings on the west side of the bridge. We completed the following tasks:

- Coordinated with the City of Fife for the proposed water main redesign.
- Reviewed as-builts of FedEx water main design.
- Began design of loop connection to public water main on FedEx property.
- Developed options for fire protection on west side of bridge, including dry pipe, hose cabinet, and wet pipe with freeze protection. Coordinated with City of Fife on fire protection options.
- Researched and specified fire hose cabinet.
- Designed separate domestic water service for west side of bridge, including updating design of freeze protection system.
- Updated plans and specifications for water system redesign.

5 Restoration of area of land bridge over stream and wetland mitigation area: \$1,100

At the completion of the stream restoration project, a land bridge with a culvert for the stream was left over the stream and wetland mitigation area to provide access to the west side of the stream during construction of the park. Additionally, the wetland mitigation planting was moved from that stream restoration project to this park project. We completed the following tasks:

- Coordinated with BergerABAM on plans and specifications for planting and restoration in the wetland mitigation area.
- Revised plans to show removal of land bridge and culvert, including grading in land bridge area.
- Incorporate BergerABAM plans, specifications, and bid items into contract documents.

6 Creation of bid additives and schedules: \$5,090

Based on direction from the City Council it was requested that we break out the south playground as a bid additive and also make the play tiles a bid additive. Additionally, the City requested that certain scopes of work be broken out in separate schedules so that their costs could be quantified. These scopes of work included: bridge, wetland mitigation, right-of-way (non-taxable). Only the right-of-way work was originally planned to be broken out separately. We completed the following tasks:

- Met with City of Fife staff to review Council direction and determine bid additives and schedules.
- Developed bid schedules and modified drawings to reflect work breakout.
- Updated specifications to include bid additive work.



7 Power undergrounding: \$11,650

The City of Fife requested that the design be modified to include the undergrounding of the power and communication lines that are currently overhead near the proposed entrance to the park. We completed the following tasks:

- Coordinated with Tacoma Power, CenturyLink, and Comcast on the design of the new underground infrastructure.
- Coordinated with BCE on routing of primary power onto the site from underground location.
- Design replacement street lighting for existing cobra head light to be removed with pole removal.
- Met with Tacoma Power and BCE to review design and planned loads.
- Updated civil engineering plans to show joint utility trench and primary power route.
- Developed joint utility trench details.
- Modified water design to prevent conflicts with joint utility trench.
- Updated specifications to include power undergrounding work.

8 North wetland buffer impacts: \$11,220

During the course of design, the City’s wetland biologist visited the site and determined that there was a previously undocumented wetland on the south side of the creek, north of the project. The required wetland buffer encroached into the proposed park and required redesign of several areas.

We completed the following tasks related to the discovered wetland:

- Met with City staff to review impacts of wetland buffer and discuss averaging options and placement of portions of the trail within the buffer.
- Coordinated with Widener Associates on extents and impacts of buffer.
- Imported shapefile data from Widener Associates to locate wetland and buffer on plans.
- Revised trail alignment, grading, and bioretention areas to meet critical area code requirements.
- Revised layout of the east playground and surrounding areas to keep it out of the wetland buffer.
- Updated storm drainage basin delineations and calculations based on modified layouts and grading.
- Designed buffer enhancement planting for area between the trail and property line.
- Updated plans to include required fencing and signage for wetland buffer area.

9 Planting revisions: \$2,590

The City requested that the planting plan be modified to space out plants in areas where planting was not dictated by stormwater requirements. We completed the following tasks related to the planting plan revisions:

- Coordinated with City staff on desired modification to plant spacing.



- Revised plans to reflect plant spacing modifications.

10 BBQ relocation: \$4,140

The City of Fife requested that the planned built-in BBQs in the large picnic shelter be moved out from under the shelter structure due to fire safety concerns. We completed the following tasks related to the relocation of the BBQs:

- Coordinated with City staff on location of BBQs.
- Revised landscape architecture plans to show BBQs moved out from under large picnic shelter.
- Develop details for standalone BBQs and update specifications.
- Revised architectural and structural plans to remove BBQs from large picnic shelter and modify counters due to lesser loading.

11 Increase in vehicle load capacity of bridge: \$7,640

The City of Fife requested that the vehicle load capacity of the bridge be increased from 20,000 lb. to 25,000 lb. It was also requested that we confirm the use of pre-cast concrete piles for support of the bridge abutments. We completed the following tasks related to increasing the vehicle load capacity of the bridge:

- Coordinated with Contech Engineered Solutions for revised bridge details and reaction loads.
- Updated design of bridge abutments based on revised reactions from Contech.
- Updated bridge specification based on information from Contech.
- Coordinated with pile driving contractor and pre-cast pile manufacturer to confirm use of pre-stressed, pre-cast piles for this application.

12 Permit comments: \$15,860

The permitting process has been more involved than originally anticipated, with additional reviews and coordination meetings. Many of the large scope changes that have come from the permitting process are broken out in previous items in this ASR. The permit comment item covers the efforts related to review meetings, processing comments, and minor scope changes. We completed the following tasks:

- Met with City staff four times to review comments.
- Evaluated options for building insulation to allow for future heating of building without major work.
- Updated design to include insulation under restroom building slab.
- Updated vehicle tracking analysis to include vehicle turning around at west playground, per City request. Revised plans to provide necessary turning area.
- Updated plans to include replacement of failing storm manhole frames and grates in Valley Ave based on City request.



- Coordinated with City staff on infrastructure needed to support a video display board on the south wall of the restroom building. Updated drawings to include necessary infrastructure.
- Modified grading and added signage at south end of the east mound to create a pet relief area, per City Council request.

13 Cost estimate update: \$26,210

The cost estimate will require updating based on the scope changes outlined above. These changes are significant enough that it will require a full estimate to be performed. We completed or will complete the following tasks:

- Update bid form for account for changes in design.
- Update quantity takeoffs and unit pricing.
- Prepare final engineer’s estimate for the work.

Reimbursable Expenses: \$1,500

Due to the additional permitting required, there have been several full-size hard copy sets requested that have increased the reimbursable expenses beyond original estimates.

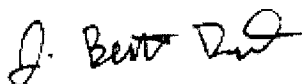
Total for ASR: \$99,540

We propose to add tasks for each discipline in ASR 1 under Phase 9 Supplemental Services as follows:

	Landscape Arch.	Arch.	Civil Eng.	Structural Eng.	Electrical Eng.	Cost Estimating	Reimburs.
9. ASR 1	\$17,640	\$4,560	\$47,240	\$6,100	\$2,500	\$20,000	\$1,500

We appreciate the opportunity to present this additional services request to the City of Fife and would be glad to discuss with you, in more detail, the above scopes and fees.

Sincerely,



Ben Dort
BCRA Project Manager

